



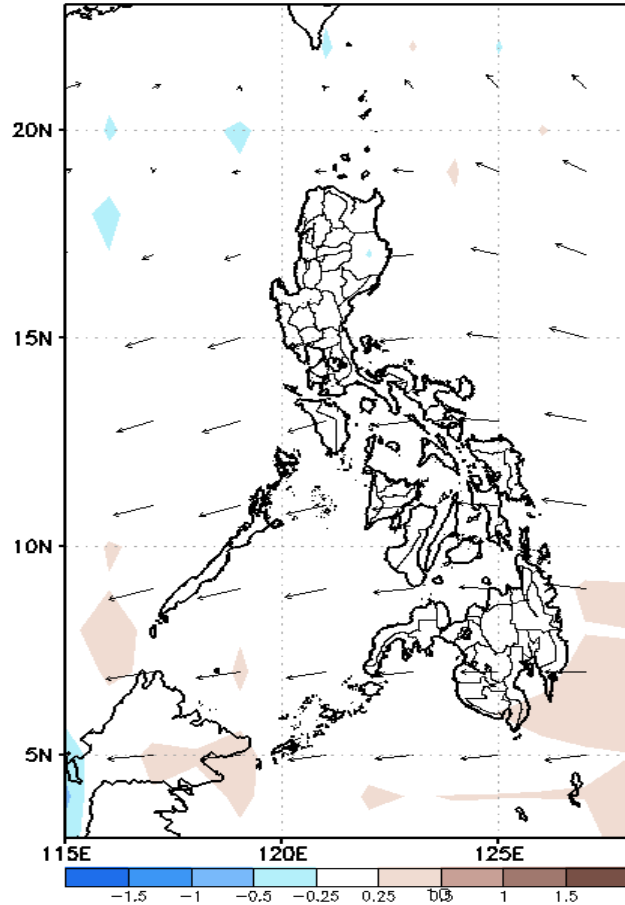
# Week 1 & Week 2 Forecast for the Philippines using GEFS Model



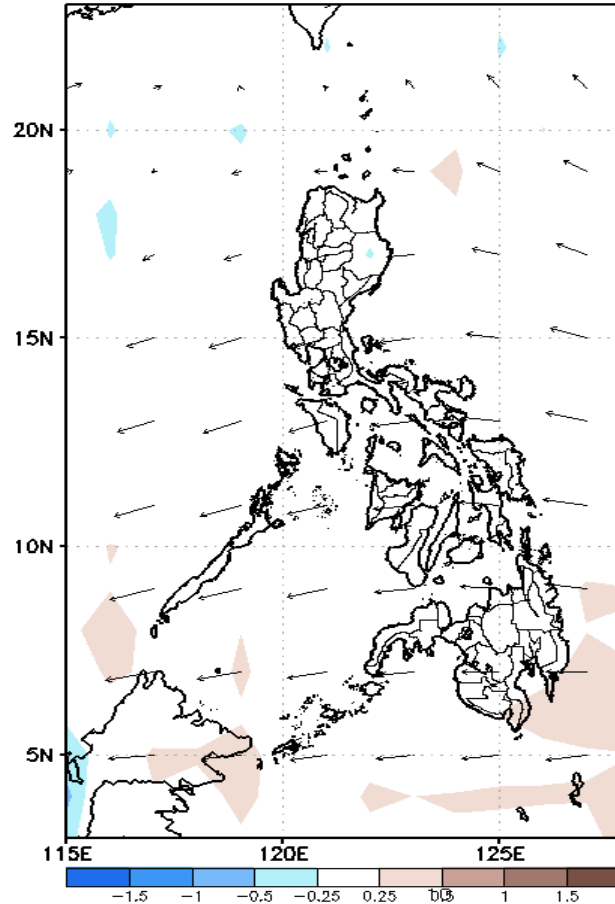
# GEFS Week-1 Forecasts: Divergence & Wind Anomaly

**Week 1: Aug 09-15, 2021**

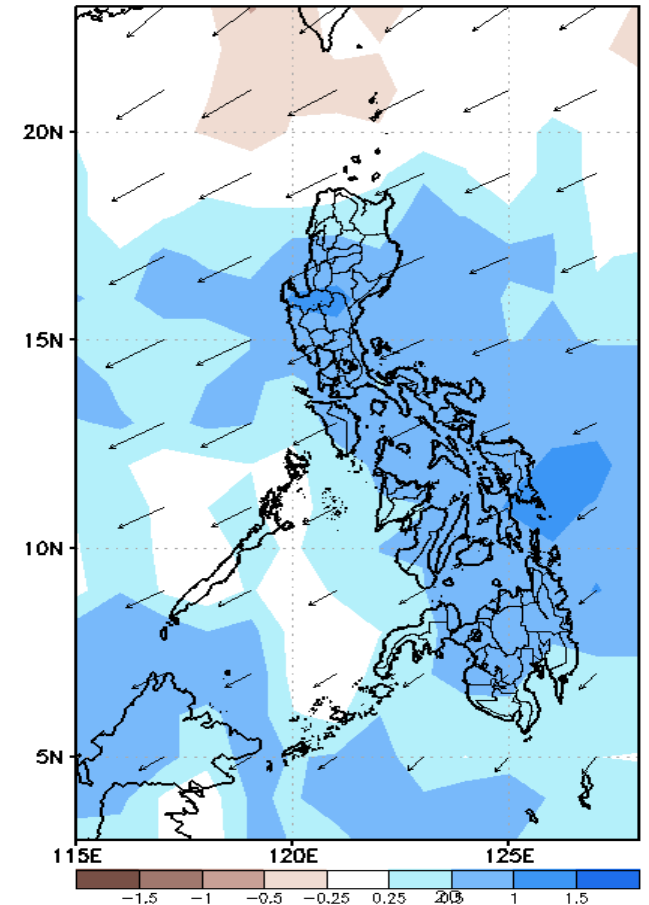
GEFS Week-1 850-hPa Divergence and Wind Anom  
Valid: 20210809 - 20210815



GEFS Week-1 700-hPa Divergence and Wind Anom  
Valid: 20210809 - 20210815



GEFS Week-1 200-hPa Divergence and Wind Anom  
Valid: 20210809 - 20210815

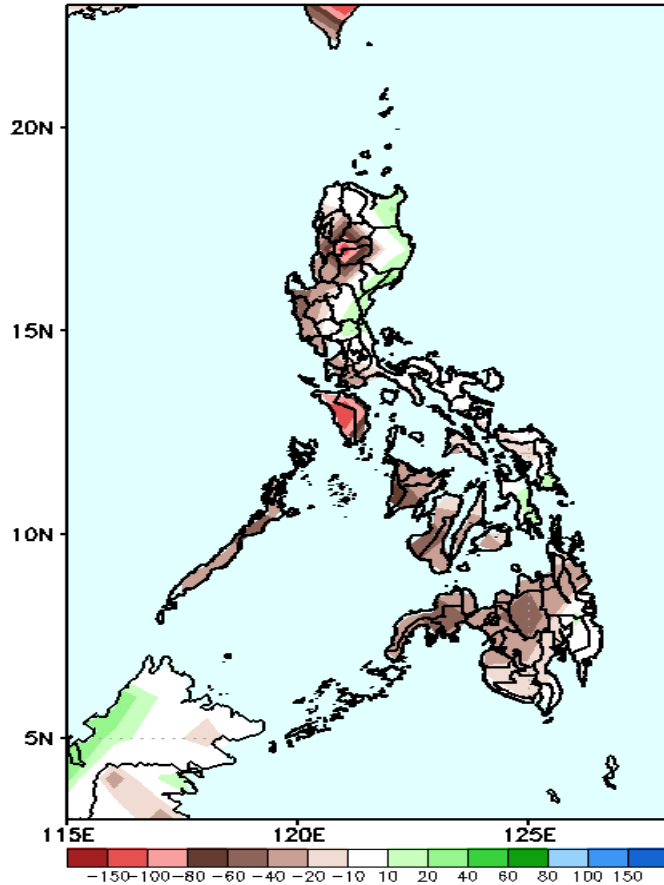


Upper and low level Divergence suggest likelihood of precipitation in most parts of the country. Easterlies affecting the rest of the country. Easterlies affecting most parts of the country attributing to warmer temperatures. Expect light to moderate rains due to thunderstorms during the forecast period.

# Precipitation Anomaly and Exceedance Probability > 25/50 mm

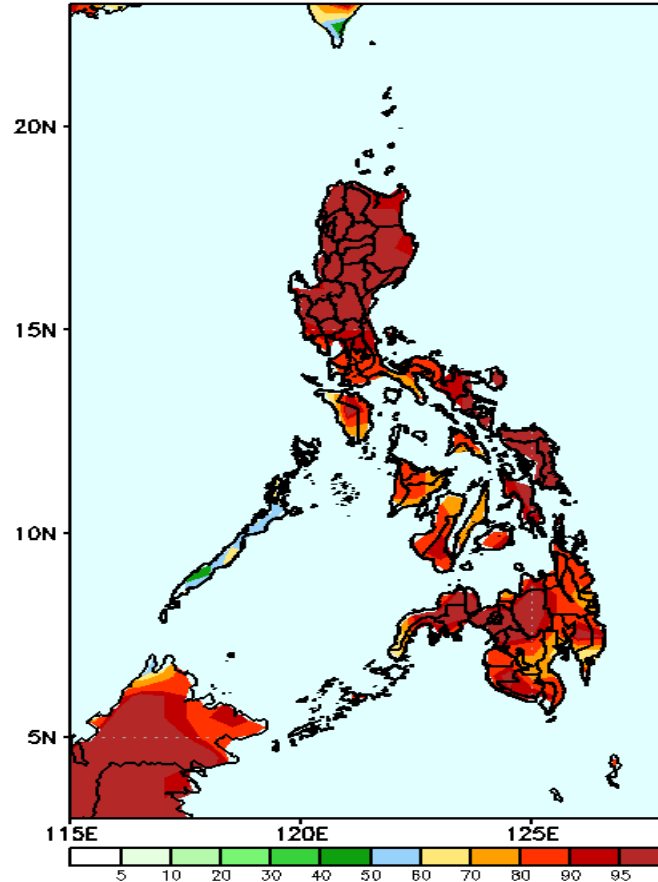
**Week 1: Aug 09-15, 2021**

GEFS Week-1 Precip Anomaly  
Valid: 20210809 - 20210815



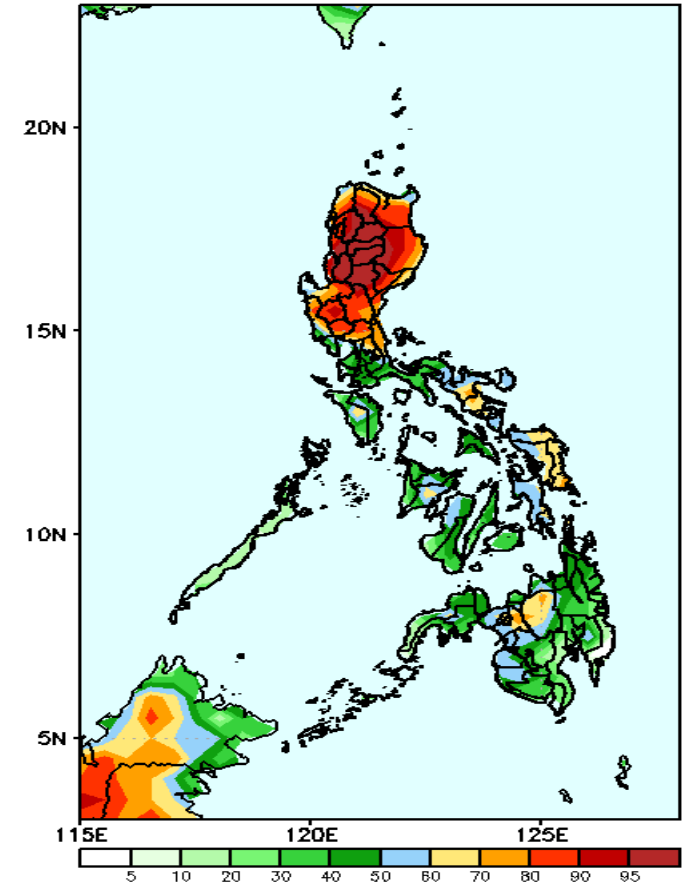
Rainfall deficit of 40-100mm is expected in most parts of the country (especially in Cordillera Region & Mindoro) during the forecast period.

GEFS Week-1 Exceedance Prob. > 25mm  
Valid: 20210809 - 20210815



High probability of rainfall to exceed 25mm in most parts of the country is expected during the forecast period.

GEFS Week-1 Exceedance Prob. > 50mm  
Valid: 20210809 - 20210815



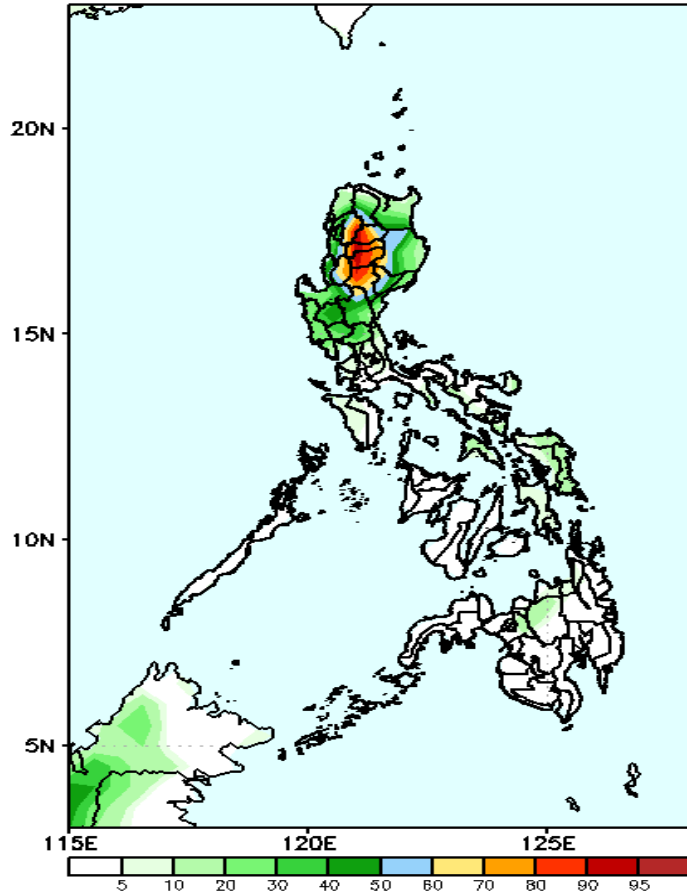
High probability of rainfall to exceed 50mm in Northern and Central Luzon, while less likely for the rest of the country during the forecast period.



# Exceedance Probability > 100/150/200 mm

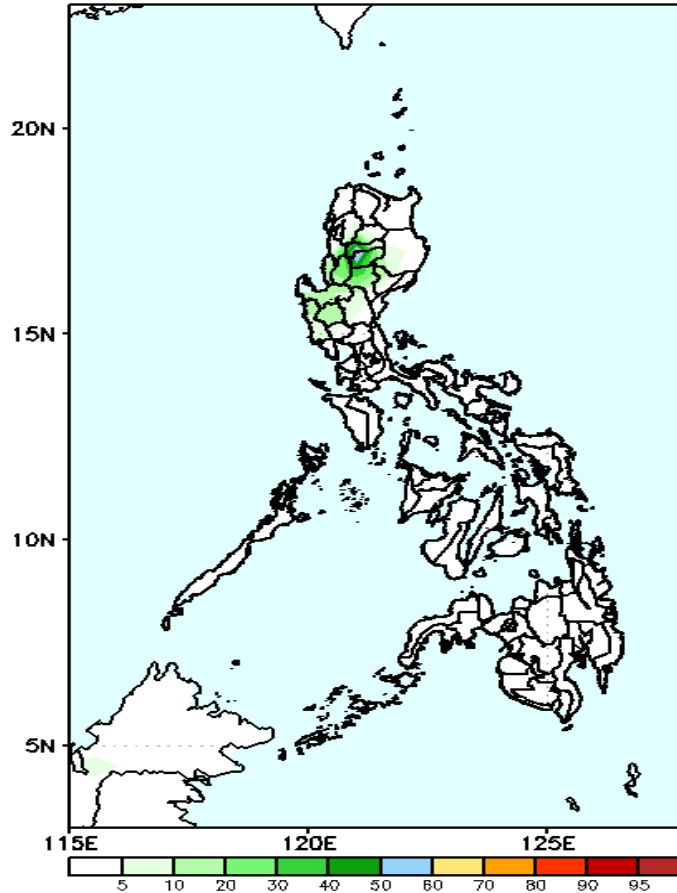
## Week 1: Aug 09-15, 2021

GEFS Week-1 Exceedance Prob. > 100mm  
Valid: 20210809 - 20210815



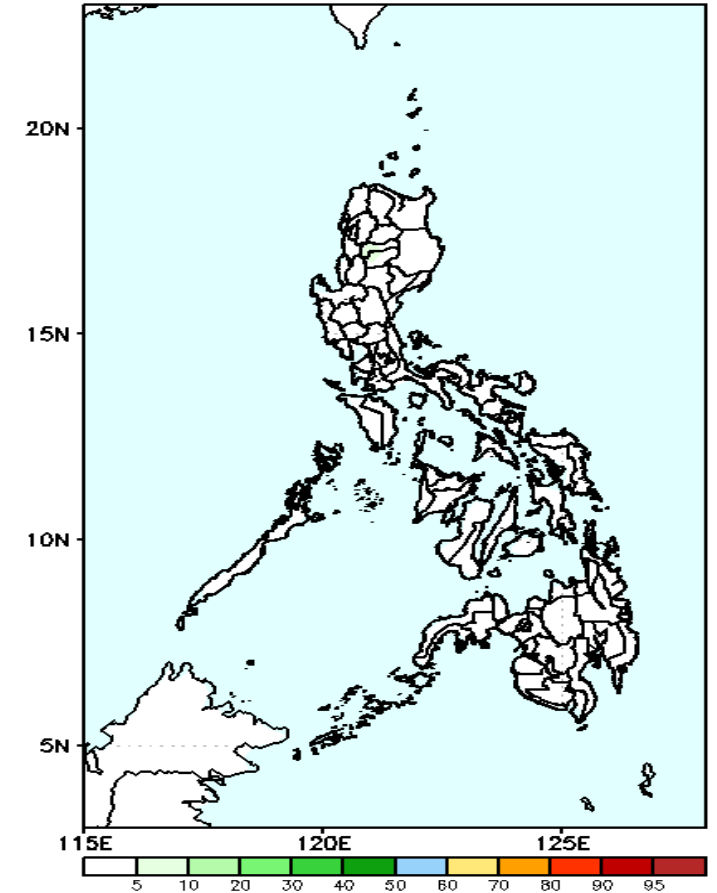
High probability of rainfall to exceed 100mm in Cordillera Region while less likely for the rest of the country during the forecast period.

GEFS Week-1 Exceedance Prob. > 150mm  
Valid: 20210809 - 20210815



Less probability of rainfall to exceed 150mm in most parts of the country is expected during the forecast period.

GEFS Week-1 Exceedance Prob. > 200mm  
Valid: 20210809 - 20210815



Less probability of rainfall to exceed 200mm in most parts of the country is expected during the forecast period.



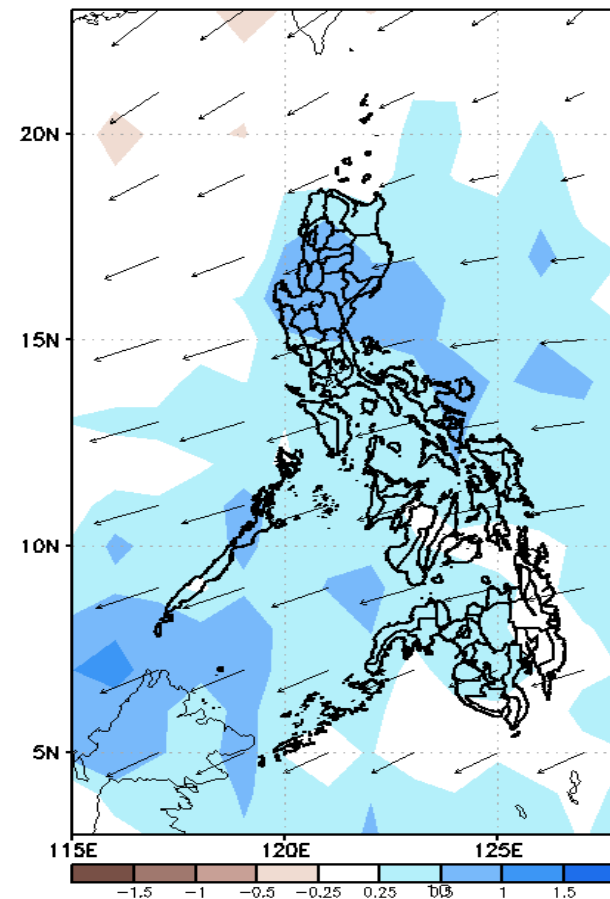
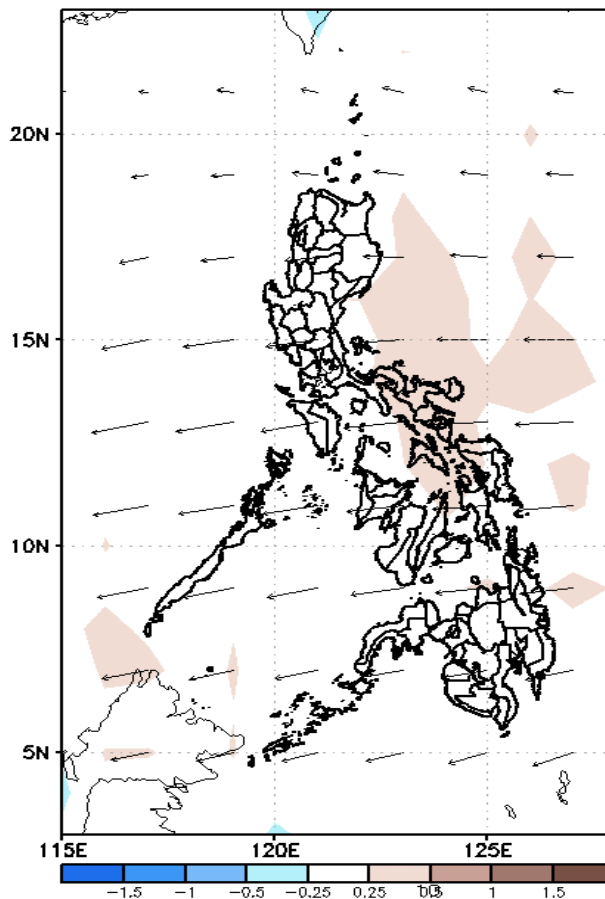
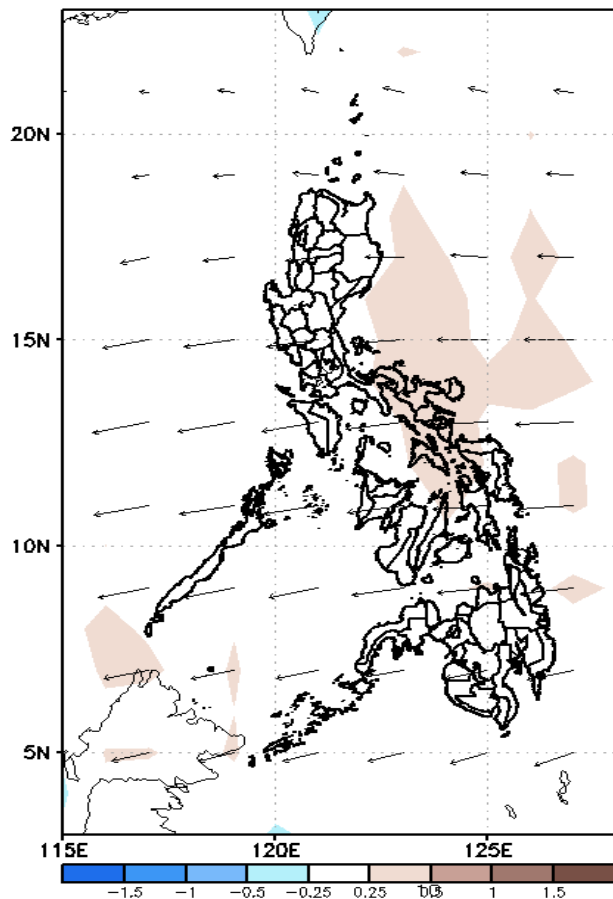
# GEFS Week-2 Forecasts: Divergence & Wind Anomaly

Week 2: Aug 16-22, 2021

GEFS Week-2 850-hPa Divergence and Wind Anom  
Valid: 20210816 - 20210822

GEFS Week-2 700-hPa Divergence and Wind Anomc  
Valid: 20210816 - 20210822

GEFS week-2 200-hPa Divergence and Wind Anom  
Valid: 20210816 - 20210822



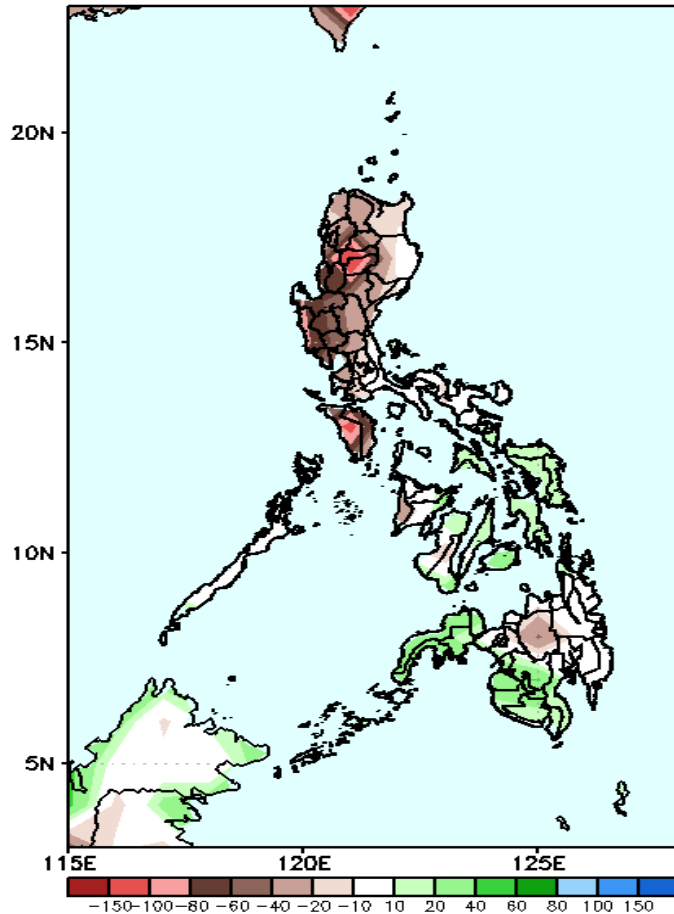
Upper and low level Divergence suggest likelihood of precipitation in most parts of the country. Easterlies affecting most parts of the country attributing to warmer temperatures. Expect light to moderate rains due to thunderstorms during the forecast period.



# Precipitation Anomaly and Exceedance Probability > 25/50 mm

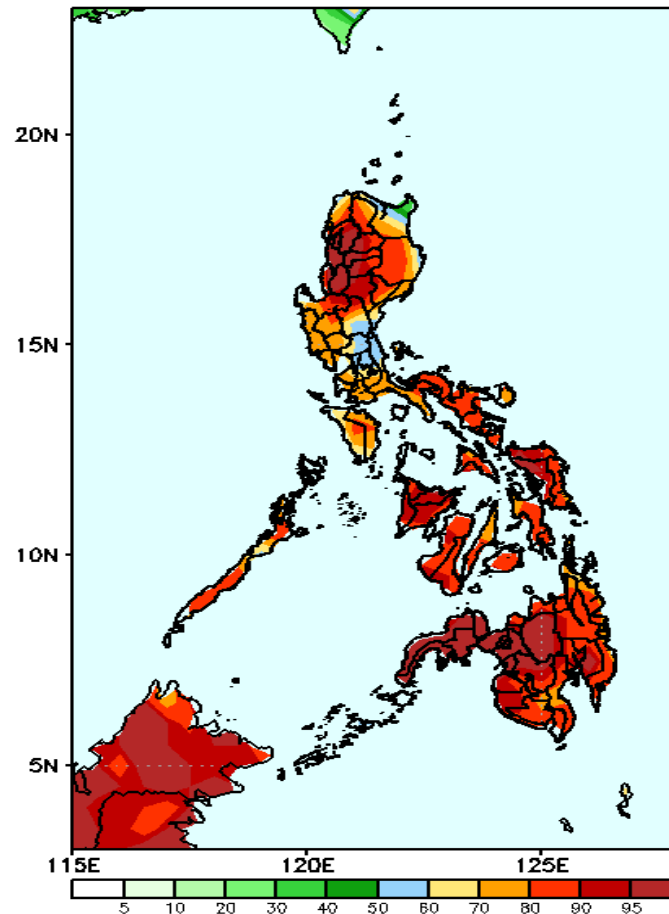
## Week 2: Aug 16-22, 2021

GEFS Week-2 Precip Anomaly  
Valid: 20210816 - 20210822



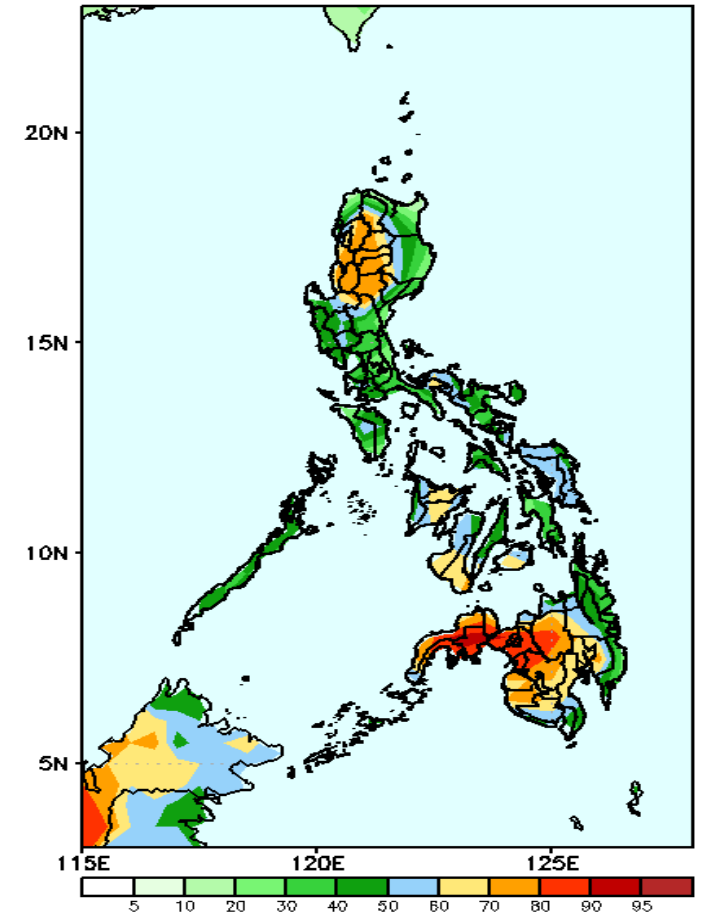
Rainfall deficit of 40-100mm is expected in most parts of Luzon while 20-40mm increase of rainfall in most parts of Visayas and western Mindanao during the forecast period.

GEFS Week-2 Exceedance Prob. > 25mm  
Valid: 20210816 - 20210822



High probability of rainfall to exceed 25mm in most parts of the country is expected during the forecast period

GEFS Week-2 Exceedance Prob. > 50mm  
Valid: 20210816 - 20210822

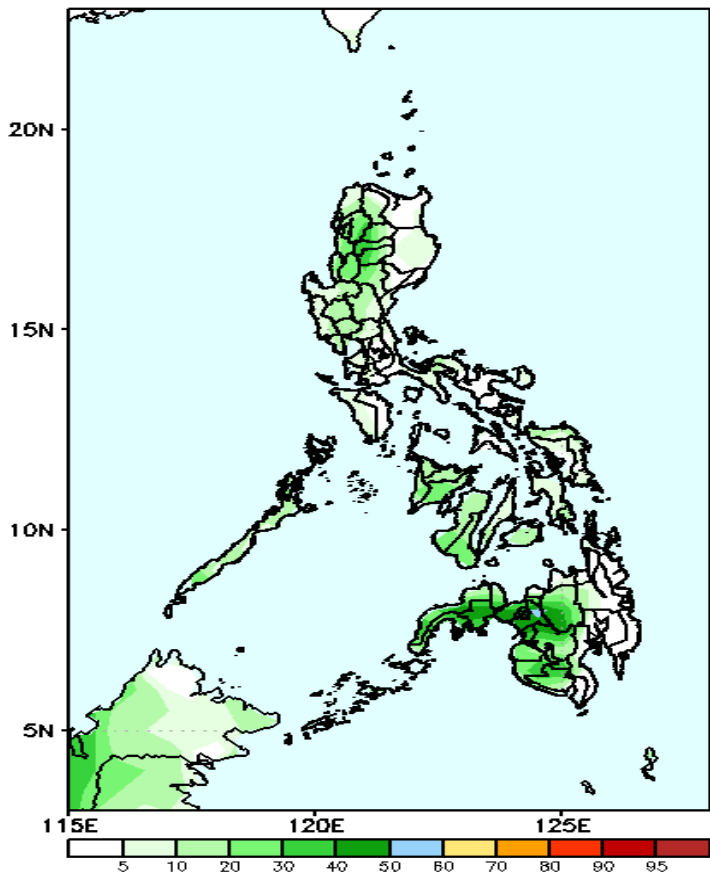


High probability of rainfall to exceed 50mm in Ilocos & Cordillera Region and western & central parts of Mindanao while less likely for the rest of the country during the forecast period.

# Exceedance Probability > 100/150/200 mm

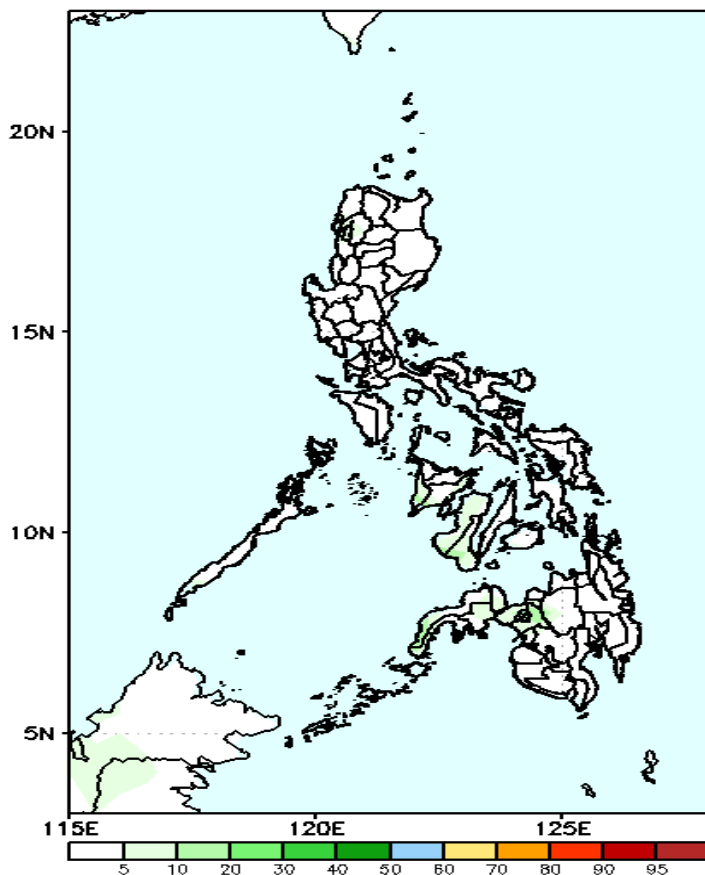
## Week 2: Aug 16-22, 2021

GEFS Week-2 Exceedance Prob. > 100mm  
Valid: 20210816 - 20210822



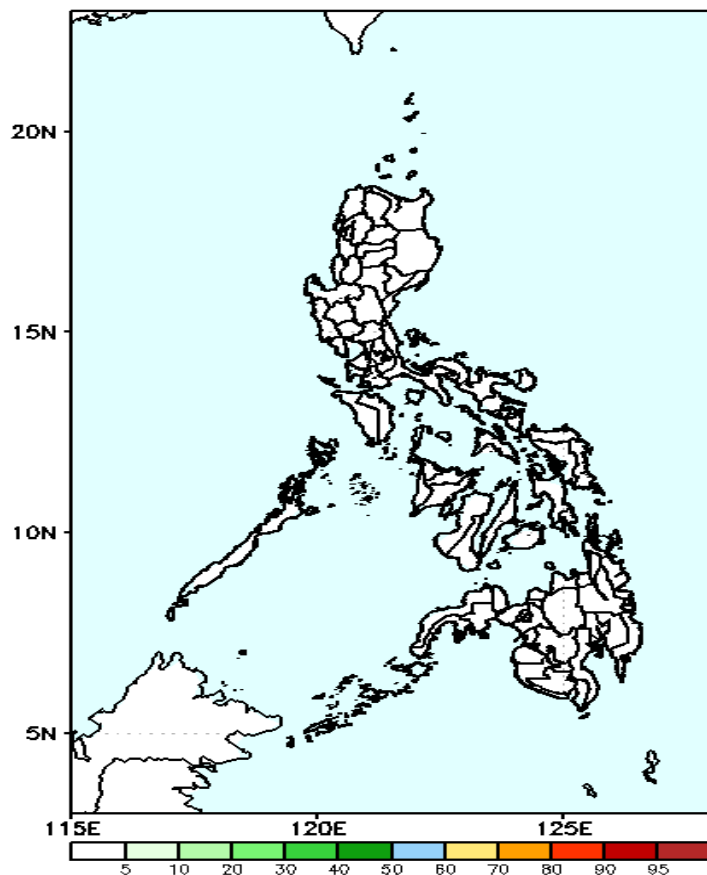
Less probability of rainfall to exceed 100mm in most parts of the country is expected during the forecast period.

GEFS Week-2 Exceedance Prob. > 150mm  
Valid: 20210816 - 20210822



Less probability of rainfall to exceed 150mm in most parts of the country is expected during the forecast period.

GEFS Week-2 Exceedance Prob. > 200mm  
Valid: 20210816 - 20210822

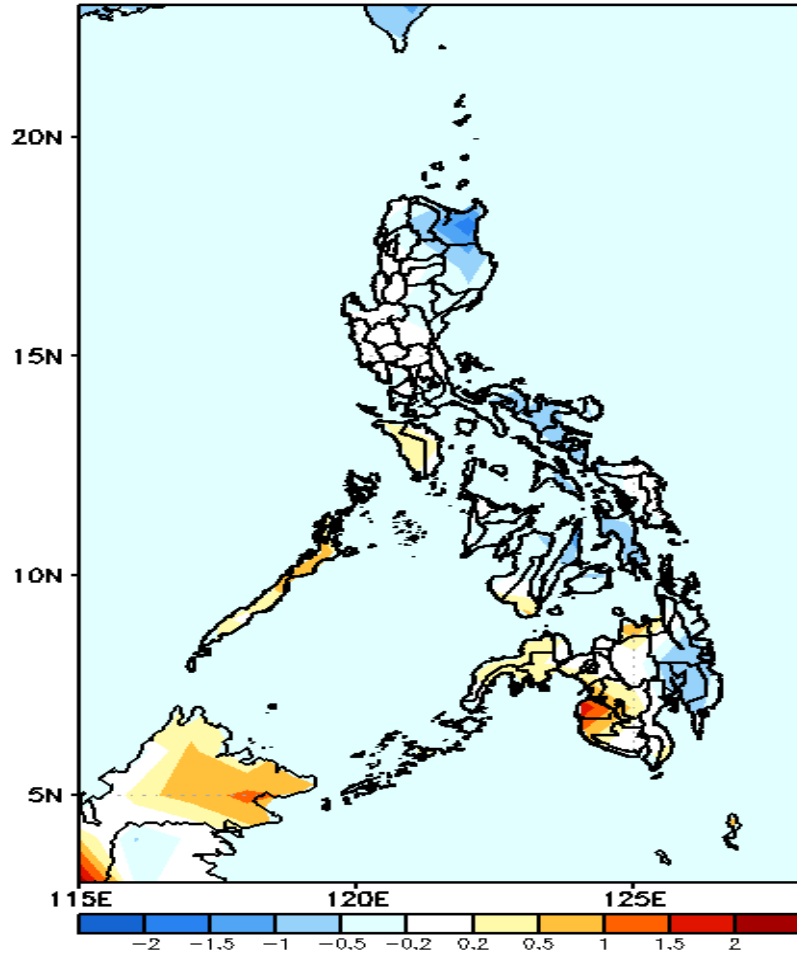


Less probability of rainfall to exceed 200mm in most parts of the country is expected during the forecast period.



# GEFS Week-1 & 2 Forecasts: T2m Anomaly

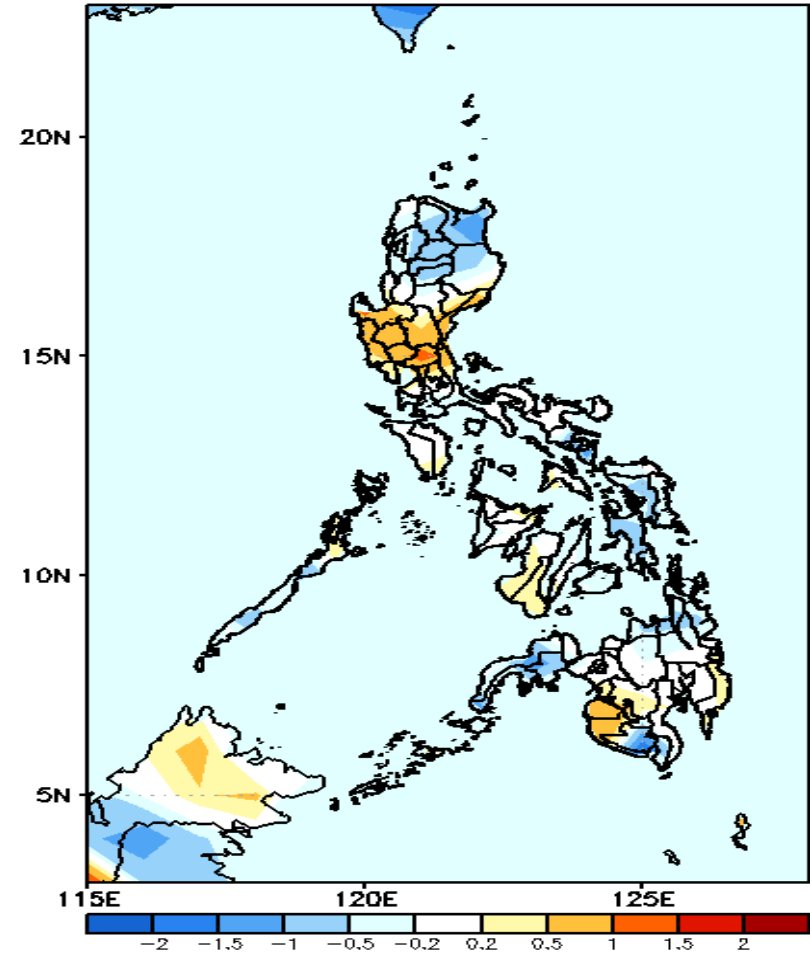
GEFS Week-1 T2m Anomaly  
Valid: 20210809 - 20210815



## 2m Temperature Week 1: Aug 09-15, 2021

Slightly cooler to cooler than average surface air temperature will likely experience in northeaster Luzon, Bicol Region, Central Visayas and Davao Region while average to slightly warmer for the rest of the country during the forecast period.

GEFS Week-2 T2m Anomaly  
Valid: 20210816 - 20210822



## 2m Temperature Week 2: Aug 16-22, 2021

Slightly cooler to cooler than average surface air temperature will likely experience in northern Luzon Eastern Visayas Zamboanga Peninsula and South Cotabato while average to slightly warmer for the rest of the country during the forecast period.